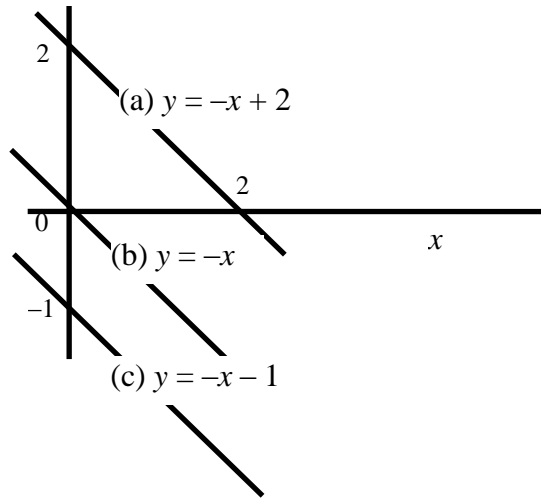


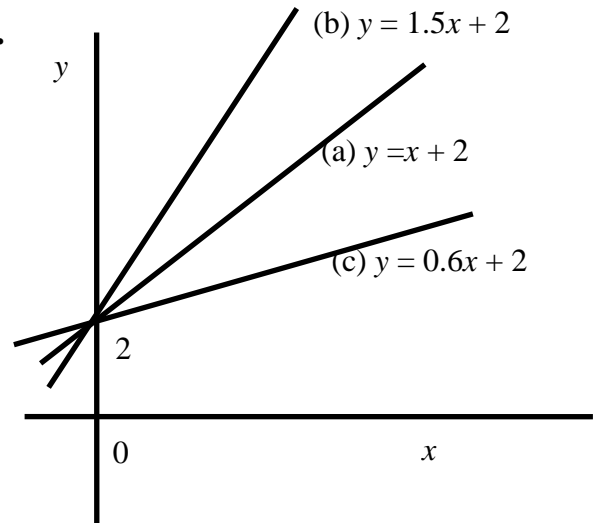
## Solutions to Additional Test Exercises Chapter 2

### Solution to additional Test Exercises 2

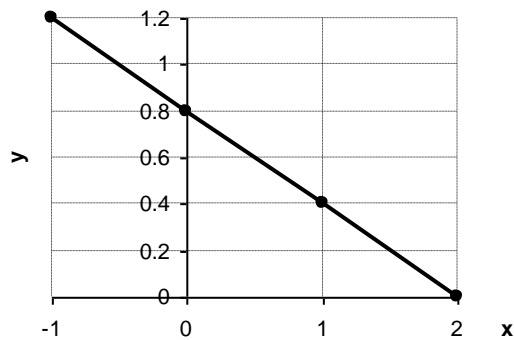
1. y



2.

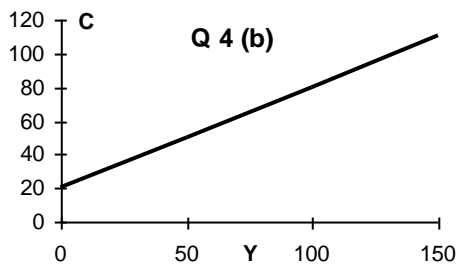


3. (a) 0, 0.8, 1.2



4. (a) (i)  $C = 20 + 0.6Y$  (ii) savings  $S = 0.4Y - 20$

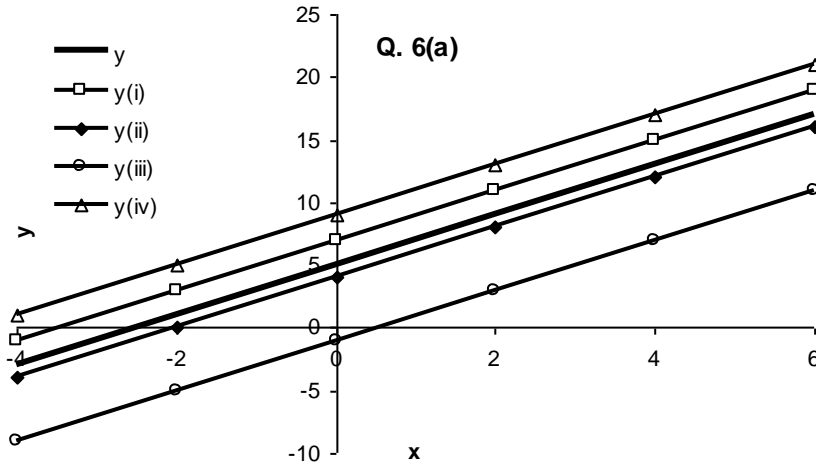
4. (b) (i)  $C = 50, S = 0$  (ii)  $C = 80, S = 20$  (iii)  $C = 104, S = 36$



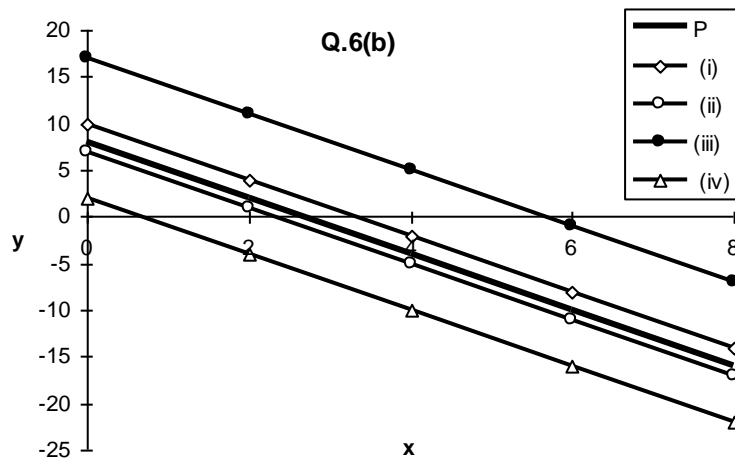
## Solutions to Additional Test Exercises Chapter 2

5 (a)  $(3, 5)$  is not on  $y = 2x$  (b)  $(5, 7)$  is not on  $Q + 1 = P$  (c)  $(4, -1)$  is not on  $TC - 8 = 2Q$

6 (a)  $y = 2x + 5$  (i)  $y = 2x + 7$  (ii)  $y = 2x + 4$  (iii)  $y = 2x - 1$  (iv)  $y = 2x + 9$



6 (b)  $P = 8 - 3Q$  (i)  $P = 10 - 3Q$  (ii)  $P = 7 - 3Q$  (iii)  $P = 17 - 3Q$  (iv)  $P = 2 - 3Q$



7.  $TC = 12800 + 212Q$  (a)  $TC = 10800 + 212Q$  (b)  $TC = 13284 + 212Q$